

BC35-G&BC28

Firmware Upgrade

User Guide

NB-IoT Module Series

Rev. BC35-G&BC28_Firmware_Upgrade_User_Guide_V1.0

Date: 2017-12-14

Status: Released



Our aim is to provide customers with timely and comprehensive service. For any assistance, please contact our company headquarters:

Quectel Wireless Solutions Co., Ltd.

7th Floor, Hongye Building, No.1801 Hongmei Road, Xuhui District, Shanghai 200233, China

Tel: +86 21 5108 6236

Email: info@quectel.com

Or our local office. For more information, please visit:

<http://quectel.com/support/sales.htm>

For technical support, or to report documentation errors, please visit:

<http://quectel.com/support/technical.htm>

Or Email to: support@quectel.com

GENERAL NOTES

QUECTEL OFFERS THE INFORMATION AS A SERVICE TO ITS CUSTOMERS. THE INFORMATION PROVIDED IS BASED UPON CUSTOMERS' REQUIREMENTS. QUECTEL MAKES EVERY EFFORT TO ENSURE THE QUALITY OF THE INFORMATION IT MAKES AVAILABLE. QUECTEL DOES NOT MAKE ANY WARRANTY AS TO THE INFORMATION CONTAINED HEREIN, AND DOES NOT ACCEPT ANY LIABILITY FOR ANY INJURY, LOSS OR DAMAGE OF ANY KIND INCURRED BY USE OF OR RELIANCE UPON THE INFORMATION. ALL INFORMATION SUPPLIED HEREIN IS SUBJECT TO CHANGE WITHOUT PRIOR NOTICE.

COPYRIGHT

THE INFORMATION CONTAINED HERE IS PROPRIETARY TECHNICAL INFORMATION OF QUECTEL WIRELESS SOLUTIONS CO., LTD. TRANSMITTING, REPRODUCTION, DISSEMINATION AND EDITING OF THIS DOCUMENT AS WELL AS UTILIZATION OF THE CONTENT ARE FORBIDDEN WITHOUT PERMISSION. OFFENDERS WILL BE HELD LIABLE FOR PAYMENT OF DAMAGES. ALL RIGHTS ARE RESERVED IN THE EVENT OF A PATENT GRANT OR REGISTRATION OF A UTILITY MODEL OR DESIGN.

Copyright © Quectel Wireless Solutions Co., Ltd. 2017. All rights reserved.

About the Document

History

Revision	Date	Author	Description
1.0	2017-12-14	Donald TANG	Initial

Contents

About the Document	2
Contents	3
Figure Index	4
1 Introduction	5
2 Tool Installation.....	6
2.1. Microsoft .NET Framework Installation.....	6
3 Firmware Upgrade	8
3.1. Firmware Upgrade via UEUpdaterUI.....	8
3.1.1. Install UEUpdaterUI	8
3.1.2. Upgrade Firmware via UEUpdaterUI.....	10

Figure Index

FIGURE 1: MICROSOFT .NET FRAMEWORK INSTALLATION PACKAGE	6
FIGURE 2: LICENSE AGREEMENT FOR MICROSOFT .NET FRAMEWORK INSTALLATION	6
FIGURE 3: MICROSOFT .NET FRAMEWORK IS INSTALLING	7
FIGURE 4: MICROSOFT .NET FRAMEWORK IS SUCCESSFULLY INSTALLED	7
FIGURE 5: UEUPDATERUI INSTALLATION PACKAGE	8
FIGURE 6: UEUPDATERUI SETUP WIZARD	8
FIGURE 7: WAIT WHILE INSTALLING UEUPDATERUI	9
FIGURE 8: UEUPDATERUI IS SUCCESSFULLY INSTALLED	9
FIGURE 9: UEUPDATERUI INTERFACE	10
FIGURE 10: SELECT MAIN PORT TO UPGRADE	10
FIGURE 11: CLICK BROWSE TO SELECT THE FIRMWARE PACKAGE.....	11
FIGURE 12: SELECT THE TARGET FIRMWARE VERSION.....	11
FIGURE 13: CHECK “NO BAUD SWITCH”	12
FIGURE 14: PROMPT FOR UPDATING.....	12
FIGURE 15: UPGRADING PROCESS.....	13
FIGURE 16: FIRMWARE IS COMPLETELY UPGRADED.....	14

1 Introduction

This document mainly introduces how to use UEUpdaterUI tool to upgrade firmware via main UART port for Quectel BC35-G and BC28 modules on Window 7 system.

2 Tool Installation

Customers need to install “Microsoft .NET Framework” (4.5.2 version or later) on PC before using UEUpdater.

2.1. Microsoft .NET Framework Installation

1. Double-click *microsoft.net framework 4.5.2.exe* to install Microsoft .NET Framework.

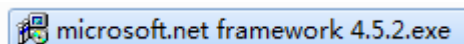


Figure 1: Microsoft .NET Framework Installation Package

2. Wait until the following window shows up, and then click “**I have read and accept the license terms**” and “**Install**” as shown below.

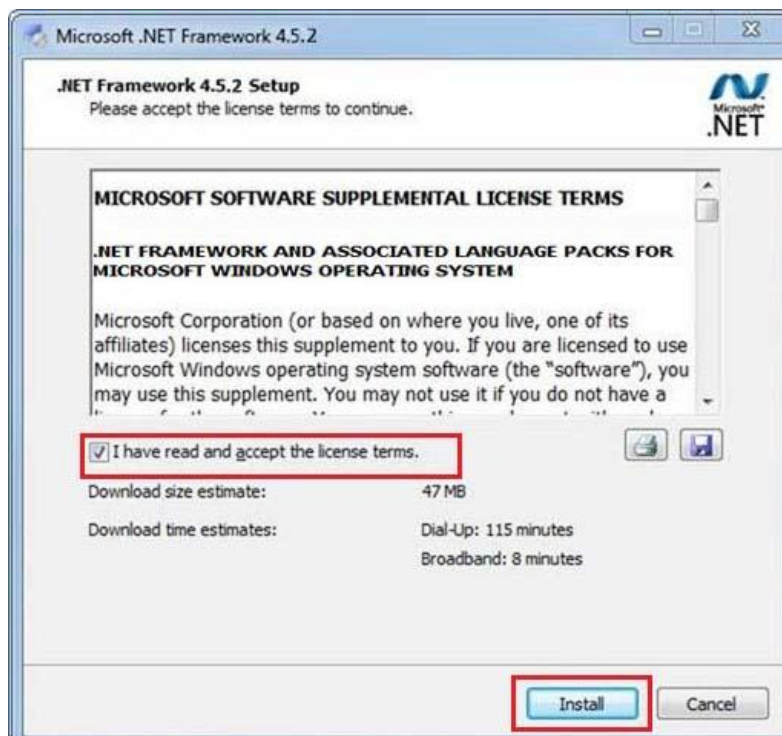


Figure 2: License Agreement for Microsoft .NET Framework Installation

3. Please wait for the program to install.

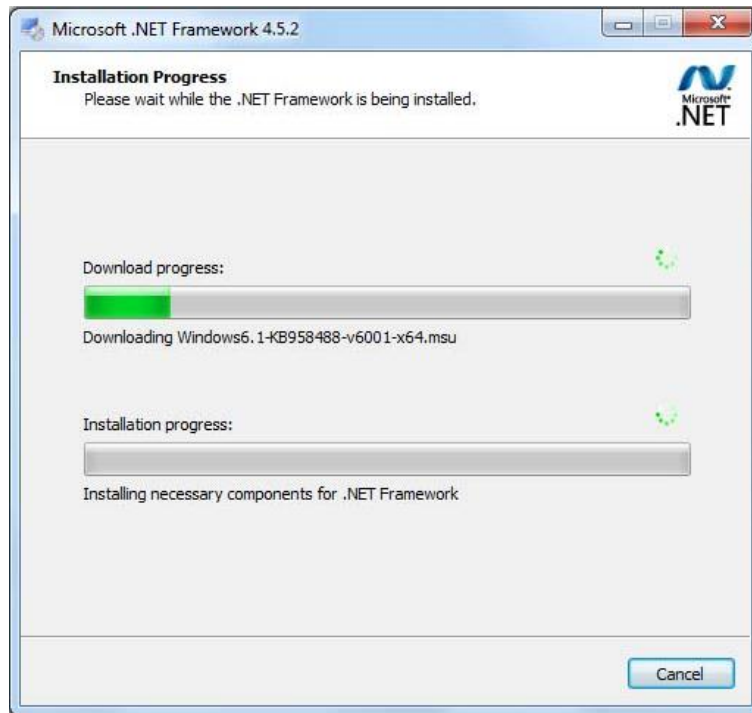


Figure 3: Microsoft .NET Framework is Installing

4. Click "Finish" to accomplish installation.

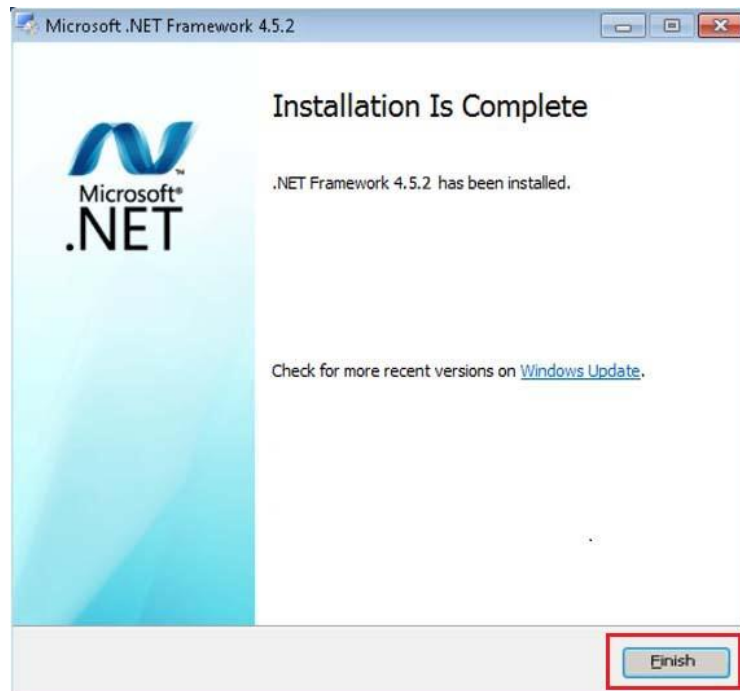


Figure 4: Microsoft .NET Framework is Successfully Installed

3 Firmware Upgrade

3.1. Firmware Upgrade via UEUpdaterUI

3.1.1. Install UEUpdaterUI

1. Double-click *UEUpdaterUI-3.11.0.5.msi* to install UEUpdaterUI.

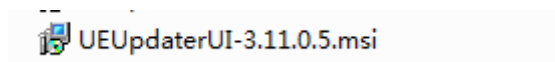


Figure 5: UEUpdaterUI Installation Package

2. Wait until the following window shows up, and then click “**Next**”.

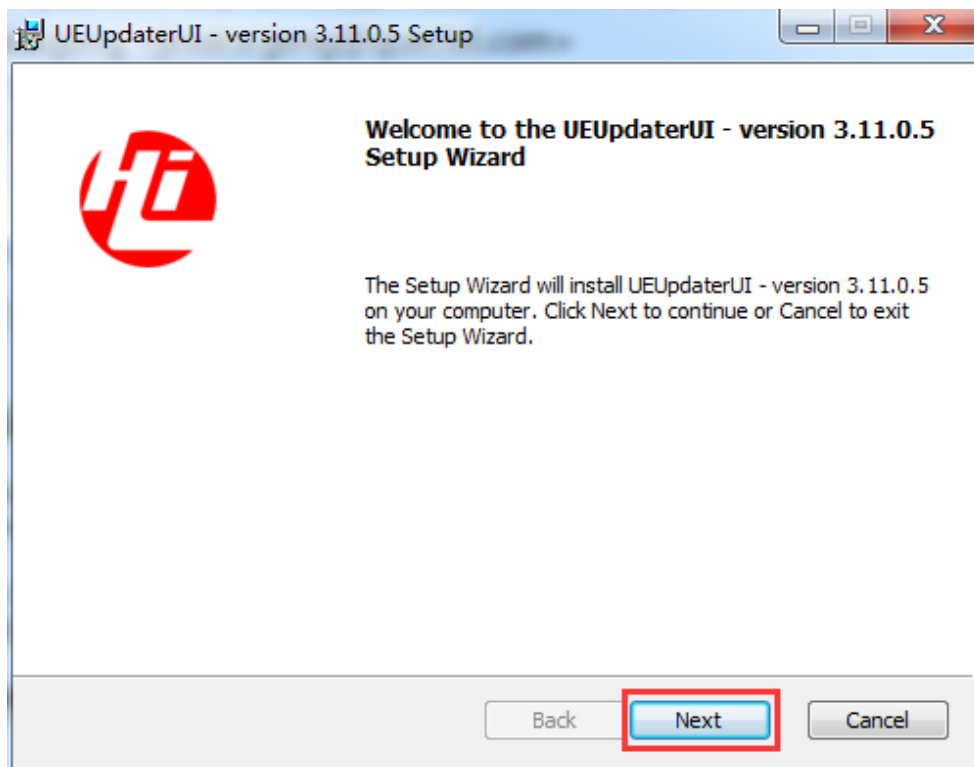


Figure 6: UEUpdaterUI Setup Wizard

3. Please wait for the program to install

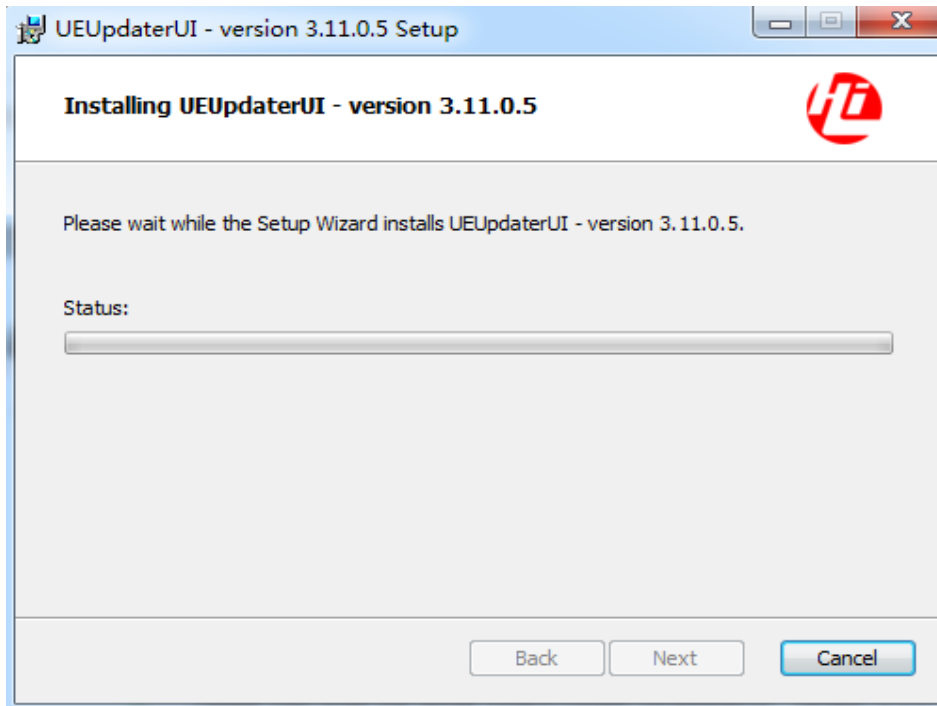


Figure 7: Wait While Installing UEUpdaterUI

4. Click "Finish" to accomplish installation. A shortcut will be automatically generated on the desktop.

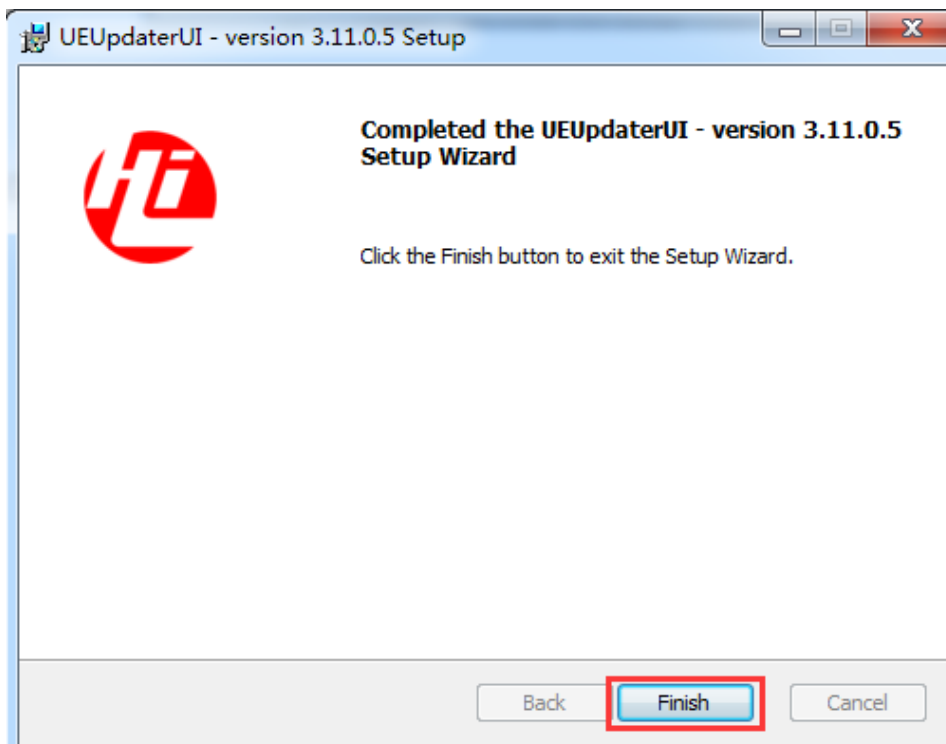


Figure 8: UEUpdaterUI is Successfully Installed

3.1.2. Upgrade Firmware via UEUpdaterUI

1. Double-click the desktop shortcut generated when installing UEUpdaterUI to open the UEUpdaterUI.

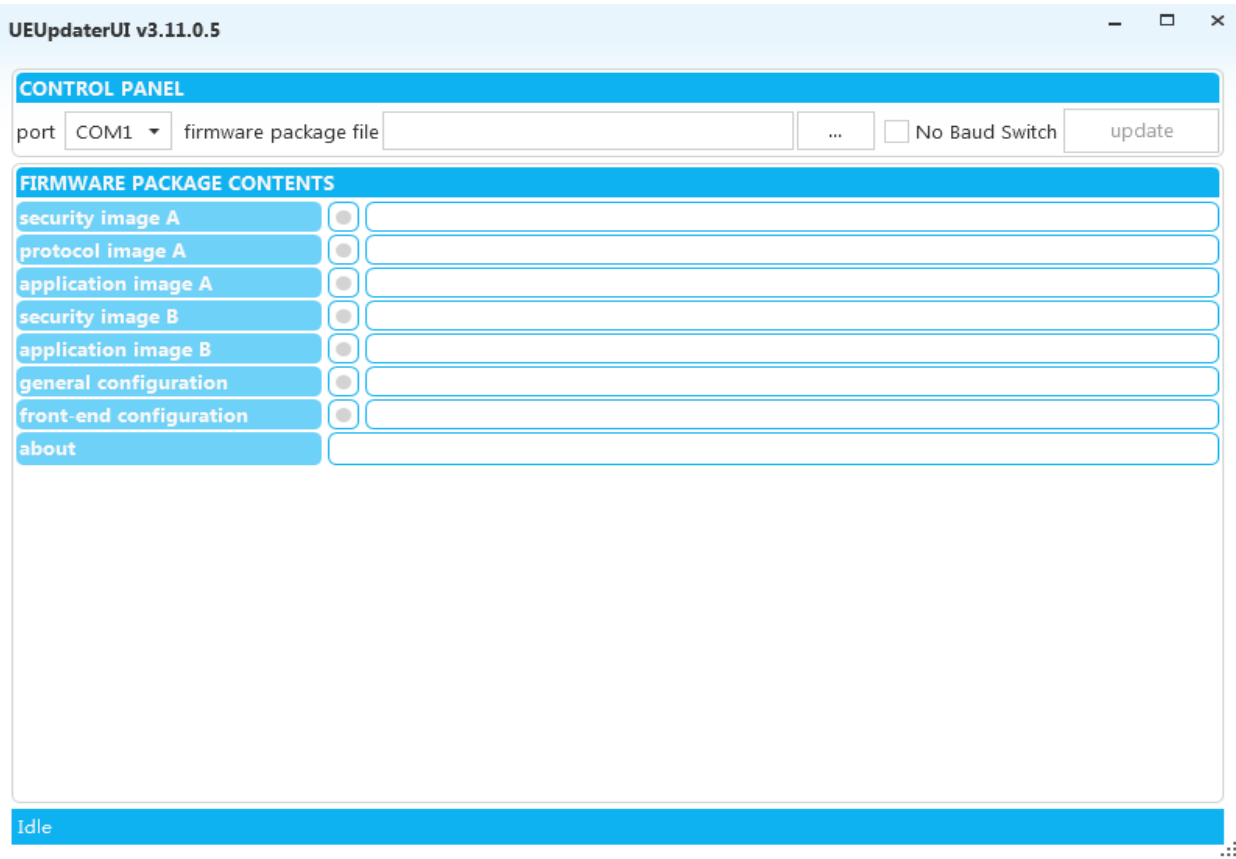


Figure 9: UEUpdaterUI Interface

2. Select the main serial port to upgrade the firmware.

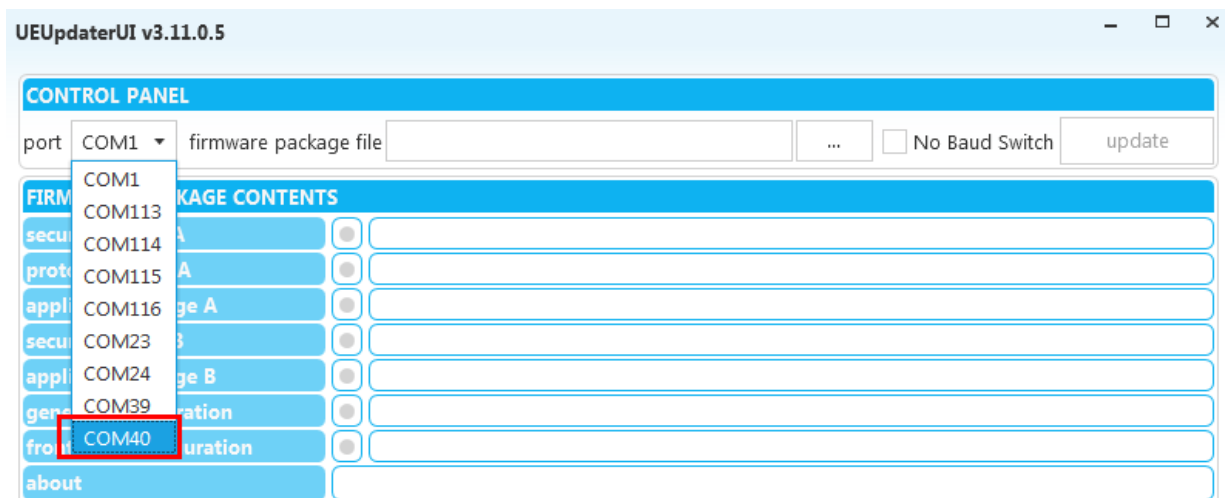


Figure 10: Select Main Port to Upgrade

3. Click the “**browse**” button to select the firmware package.

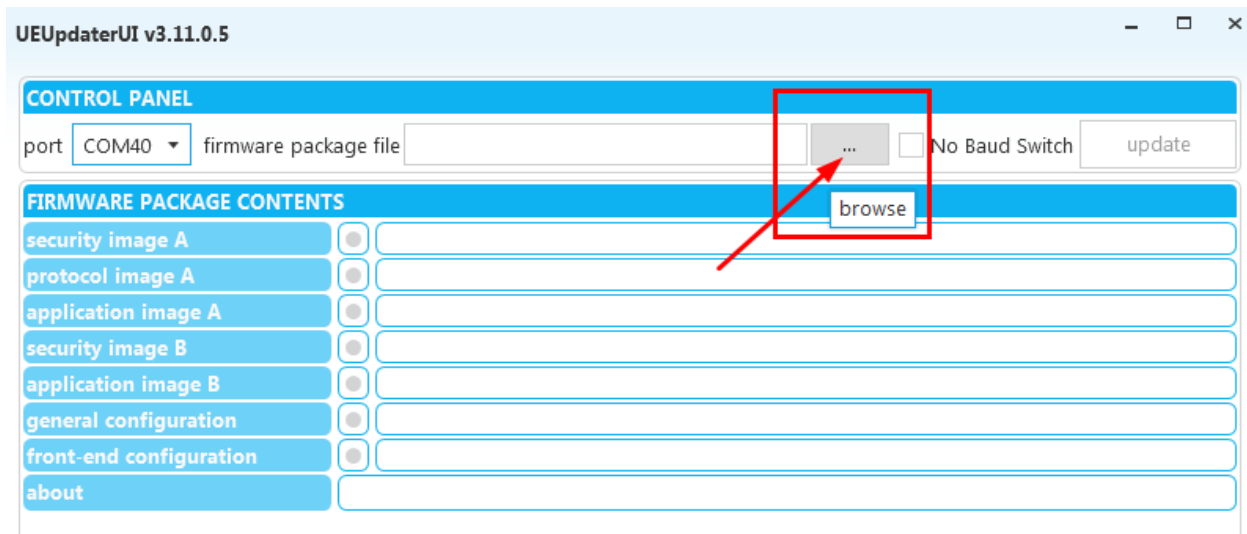


Figure 11: Click Browse to Select the Firmware Package

4. Select the target firmware version in *.fwpkg* format, and then check “**No Baud Switch**”.

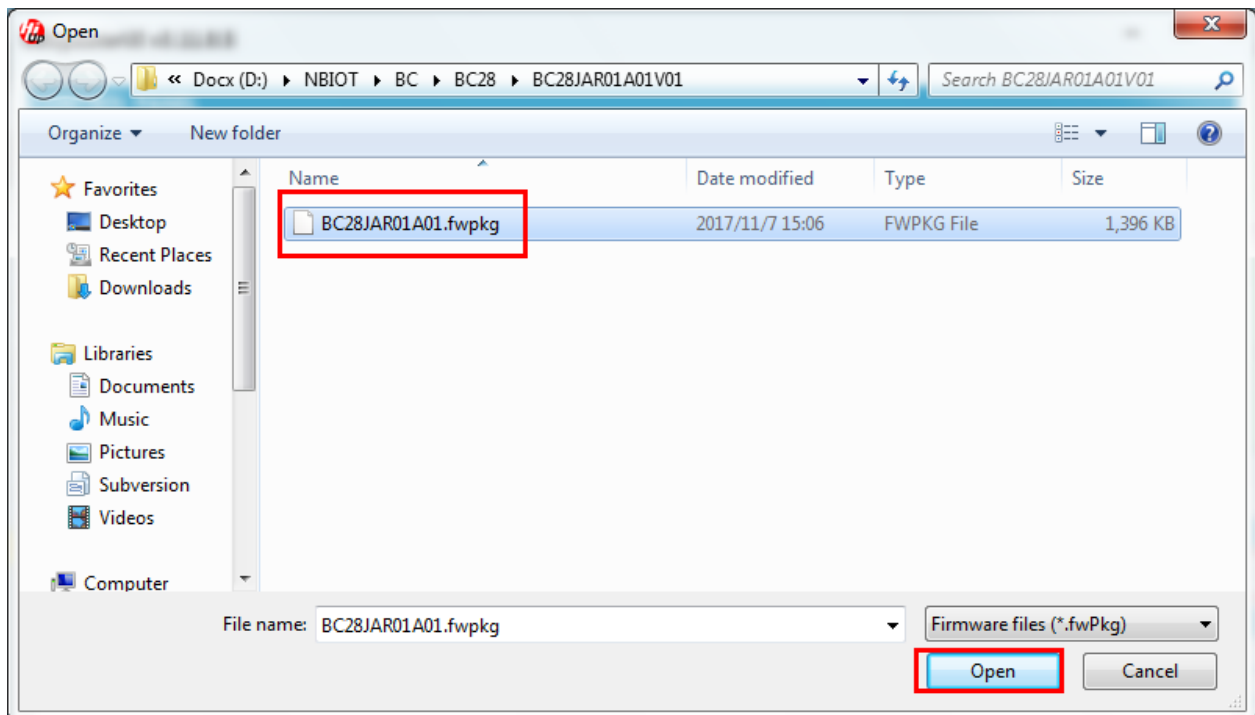


Figure 12: Select the Target Firmware Version

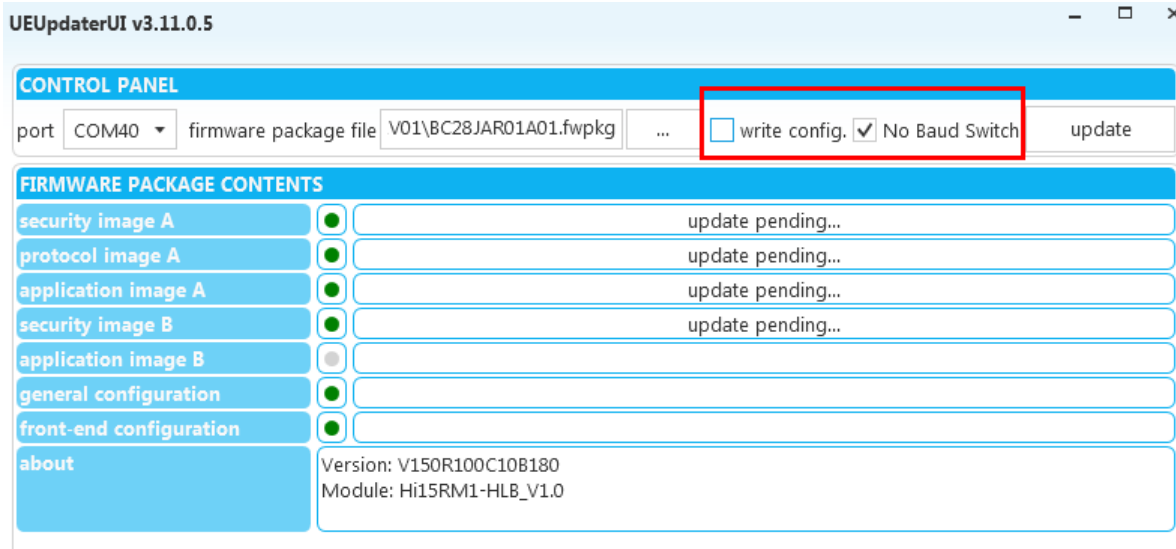


Figure 13: Check “No Baud Switch”

- Click the “**update**” button to start upgrading. When “**Waiting for UE to reboot to establish communication...**” shows up, press “**Reset**” button on the module, or power off the module and then power on to restart the module.

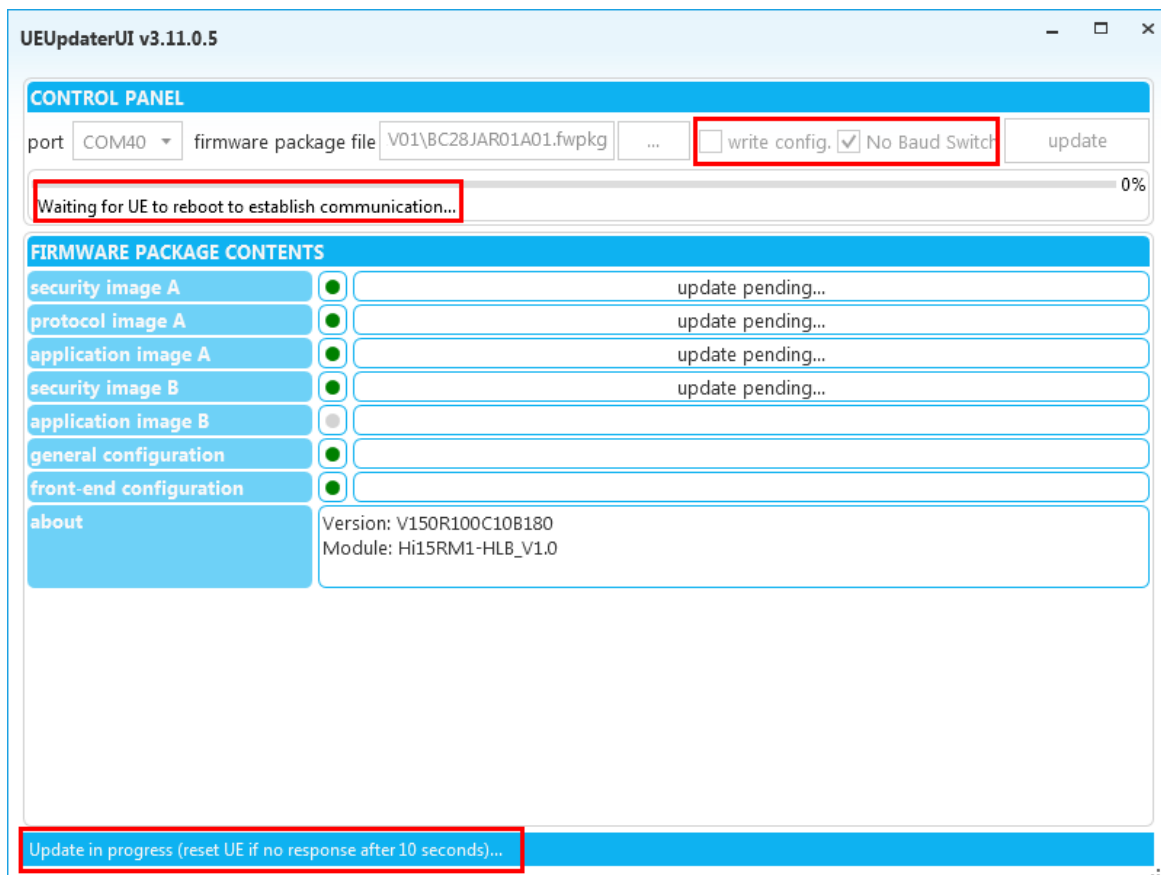


Figure 14: Prompt for Updating

NOTE

Please reset the module within 10 seconds, otherwise UEUpdateUI will be disconnected with the main port.

6. After restarting the module, it starts upgrading the firmware, please wait during the process.

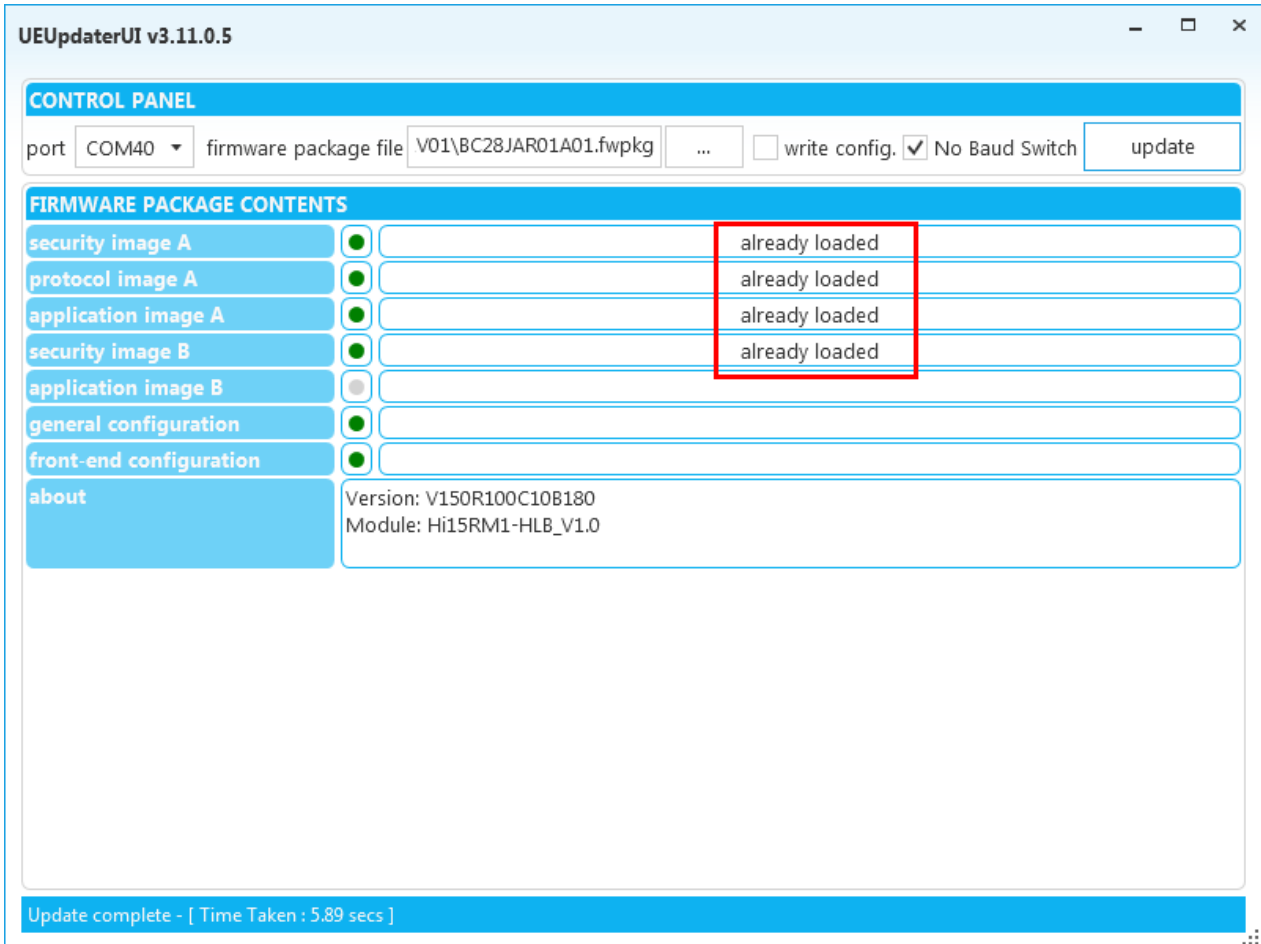


Figure 15: Upgrading Process

- When all “update pending...” status changes to “update complete” or “already loaded”, it indicates the firmware is upgraded completely.

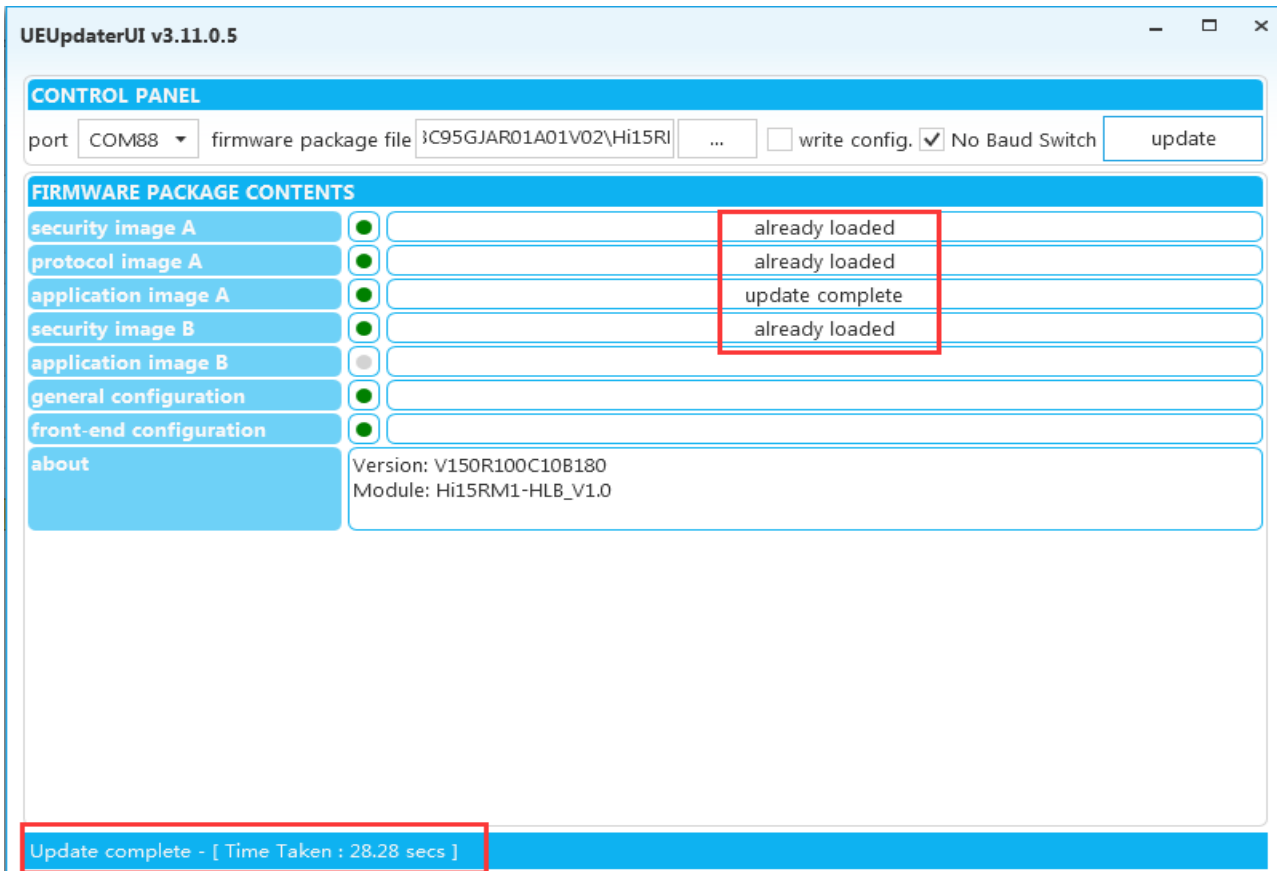


Figure 16: Firmware is Completely Upgraded

- Restart the module, and query the firmware version by AT command **ATI**. If the target version is returned, then the firmware is successfully upgraded.